

WOMBS ≈ of the ≈ WORLD FOUNDATION

Empowering Birthworkers,
Transforming Global
Maternal Health

2024

Table of Contents

1. Introduction: Mission & Vision
2. Mission & Vision
3. Zoom Out to Zoom In
4. The Current Landscape of Global Maternal Health
5. Distinction from Wombs of the World LLC
6. Core Objectives and Impact
5. Tanzania & Ecuador
6. Building Global Network of Sponsors
7. Join Our Global Network
8. How to Donate





Hello there!

Imagine waking up today knowing you could change the course of maternal health across the globe. That's the conviction that drives me every morning and the heartbeat of the Wombs of the World Foundation (WotW Foundation). Today, I'm reaching out to share a story with you—not just any story, but our story—and the difference your partnership could make.

WotW Foundation is a sister non-profit branch to Wombs of the World LLC, which offers Immersive International Educational for Birthworkers. The two entities are separate yet share the same roots and overall objective: to transform maternal health by uplifting, educating and connecting birthworkers.

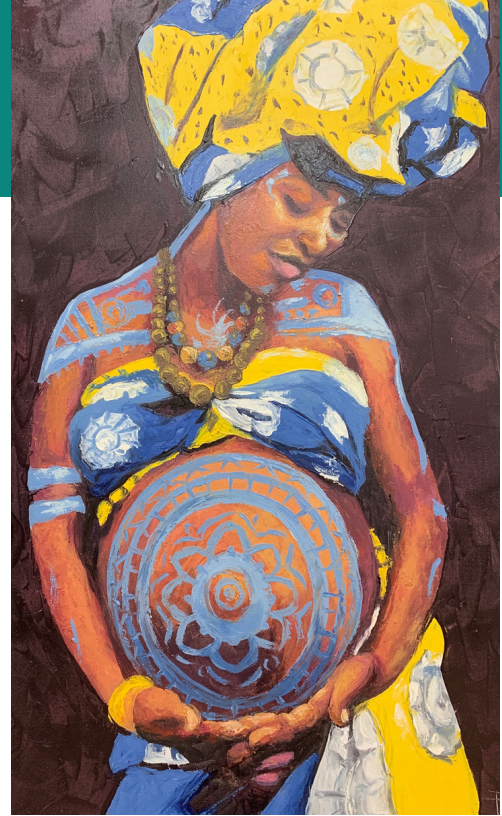
Let me tell you about how we got here.

Charlotte Brielle

Founder and Executive Director of WotW Foundation

HOW IT ALL STARTED

In January of 2018, I set off to Karatu, Tanzania, to volunteer as a doula in a rural maternity clinic. My intention was clear: to be of service and learn from a different birth culture. Little did I know that sharing the experience with my small social media following with the hashtag #wombsoftheworld would spark a movement... Messages started pouring in from birth workers around the world, all asking, **“How can I be part of this?”**



It was clear we had tapped into a collective dream to make childbirth safer and more respected, everywhere. This was the founding moment for the curation of Wombs of the World LLC's travel program for birth workers. In 2019, we started programs in Tanzania and Ecuador, focused on bringing doula care to clinics while learning about traditional midwifery practices.

With the momentum of hundreds of global birth workers eager to travel, and a following surpassing that of some of the biggest doula training organizations in the world, **our need for a 501(c)(3) nonprofit became evident.**

In 2023, the Wombs of the World Foundation was born, giving us the opportunity to elevate the work we were doing in our host countries, as well as provide more resources to birth workers and perinatal people everywhere.

WOTW FOUNDATION MISSION & VISION

To improve maternal health outcomes globally by empowering, educating, and supporting birthworkers.

Culture is dynamic, yet birth is a universal constant. We see mothers as the backbone of society, deserving of comprehensive support as they embark on the journey into parenthood. Enter the birthworker: whether a doula, a midwife, or a traditional birth attendant, this role, while seemingly cutting edge in today's society, is deeply rooted in ancient practices. Our mission is to rejuvenate this age-old wisdom, to ensure that both births and mothers are held in the highest esteem, and that the next generation is greeted with love and readiness.

Supporting a mother, in essence, supports the entire family ecosystem.

Our goals are distinct and guided by the belief in making a tangible difference:

- **Supporting Community-Led Initiatives:** We're dedicated to enhancing maternal health outcomes through projects rooted in local communities, recognizing the transformative power of grassroots efforts.
- **Providing Scholarships and Funding:** We aim to open the path of perinatal support to more individuals, reviving and honoring the ancient wisdom of birthwork as a cutting-edge choice in today's world.
- **Highlighting Traditional Birth Practices:** In a race against time, we shine a light on rapidly vanishing traditional practices, ensuring they're not lost but integrated and celebrated for their intrinsic value.
- **Offering Educational Resources:** Our commitment extends to equipping communities and birthworkers with knowledge for safer births, fostering environments where mothers and babies thrive from the start.

By championing the work of birthworkers and the care of mothers, we're not just nurturing families; **we're nurturing the future.**

We must zoom out to zoom in

As we paint a picture of maternal health disparities around the world today, we need to understand the foundation on which it is built.

01

EVE'S LEGACY: THE CURSE OF CHILDBIRTH

Childbirth was mythologized as a curse on Eve, embedding a view of maternal processes as punitive rather than natural. This perspective laid early groundwork for centuries of controlling and misinterpreting women's reproductive roles.

02

THE WITCH HUNTS: MIDWIFERY UNDER FIRE

Over 40,000 women, predominantly midwives, were executed in the Middle Ages, accused of witchcraft. This was less about sorcery and more about silencing female-led knowledge and practices.

03

THE ROOTS OF GYNECOLOGY: AN UNETHICAL FOUNDATION

Modern gynecology's advances came at a high cost, with experiments performed on enslaved women in the 1840s like Anarcha, Lucy, and Betsy without consent. This era reflects a disturbing overlook of ethics and human rights in the name of medical progress.

04

FROM HOME TO HOSPITAL

At the turn of the 20th century, birth shifted from home to hospital, leading to the marginalization of traditional grannie midwives. Invaluable knowledge was lost, and the medicalization of birth had begun. This medicalization eventually spread worldwide laying the foundation for obstetric care today.

THE NEED FOR CHANGE

THE “WHY” DRIVING US FOWARD

GLOBAL MATERNAL MORTALITY

Approximately 295,000 women **died from preventable causes** related to pregnancy and childbirth in 2017. (Source: WHO)

NEED FOR SKILLED BIRTH CARE

Skilled attendants could prevent up to 80% of maternal deaths. (Source: Every Mother Counts)

RISING MATERNAL MORTALITY IN THE US

The US faces a rising maternal mortality rate, highlighting significant health disparities and the urgent need for comprehensive maternal care. (Source: WHO)

PRESERVING TRADITIONAL MIDWIFERY

The encroachment of Western medical practices has marginalized traditional midwifery, risking the loss of invaluable, centuries-old knowledge.

BENEFITS OF DOULA AND MIDWIFE SUPPORT

Continuous support from doulas and midwives has been shown to:

- **Reduce cesarean section rates**
- **Lower the need for pain relief medication**
- **Decrease the incidence of preterm birth**
- **Improve overall childbirth experiences for mothers**

(Source: Evidence Based Birth, International Childbirth Initiative)

DISTINCTION FROM WOMBS OF THE WORLD LLC

TWO BRANCHES, SHARED ROOTS

Understanding Our Structural Differences:

Wombs of the World Foundation emerges as a sister (yet distinctive) branch to our original initiative, Wombs of the World LLC, established in 2018.

WotW LLC offers international immersive educational programs for professional birthworkers, aiming to deepen their understanding of diverse birth cultures and global perinatal practices. This mission is driven by a desire to embrace the lessons of travel and forge a powerful network of birthworkers worldwide, while learning new skills and spreading the vision of compassionate, evidence-based, perinatal care.

While both entities are united by the overarching mission of improving maternal health outcomes, their operational paths diverge to utilize their strengths effectively:

- **WotW LLC** (structurally) serves as a tour operator with a deep purpose, curating and facilitating educational and service oriented experiences for professional birthworkers in Ecuador, Tanzania, (and soon in Mexico, India, and South Africa!!).
 - **Funding Sources:** Participant tuitions & application fees.
- **WotW Foundation** focuses on mobilizing resources, funding community-led projects, and providing direct education and support in those same countries, enriching the communities that host the WotW LLC birthworker programs.
 - **Funding Sources:** Grants, private donations, sponsorships, fundraising campaigns.



CORE OBJECTIVES AND IMPACT

1.

Supporting Community-Led Initiatives: We partner with local organizations in Tanzania, Ecuador, and beyond to enhance hospital infrastructure, preserve traditional midwifery, and support birth centers. Our community-led focus ensures that projects are tailored to meet the specific needs and challenges of each region.

2.

Birthwork Scholarships: By offering scholarships, we aim to break down barriers to education and professional development for birthworkers globally. Whether it's training for a nurse in Tanzania, supporting indigenous women in Ecuador to attend midwifery school, or aiding birthworkers elsewhere, our scholarships foster a global community of skilled, compassionate caregivers.

3.

Educational Resources: Developing and disseminating educational materials is crucial to our mission. From guides for expectant mothers to training programs for healthcare providers, we aim to fill knowledge gaps and enhance the quality of maternal health care.

MATERNAL HEALTH IN TANZANIA: KEY CHALLENGES AND SOLUTIONS

Maternal Mortality: As of 2019, Tanzania faces a high maternal mortality ratio of 556 deaths per 100,000 live births.

Global Context: The World Health Organization notes that 70% of global maternal deaths occur in Sub-Saharan Africa, with Tanzania being significantly impacted.

Geographical Challenges: The vast and rural geography of Tanzania makes accessing healthcare facilities difficult. Many expecting mothers must travel long distances for care, leading to delays and increased risk of complications.

Healthcare Facility Limitations: Even when care is reached timely, facilities often lack the necessary medical equipment, supplies, and infrastructure for emergency obstetric care.

Strategies for Improvement:

- **Infrastructure Investment:** Enhance healthcare infrastructure to support emergency obstetric care effectively.
- **Professional Training:** Invest in the training of healthcare professionals to improve the quality of maternal care.
- **Transportation Improvements:** Develop better transportation systems to facilitate quicker access to healthcare facilities.
- **Prenatal Care Services:** Strengthen prenatal care services to ensure expecting mothers receive consistent, quality care throughout their pregnancy.
- **Community Education:** Promote education and awareness about the importance of maternal healthcare to encourage early and regular care-seeking behaviors.



WotW IMPACT SO FAR:

- In 2019, partnered with SAFE WATER NOW to provide fifty water filters to clinics, along with reusable menstrual pads and soap from BOMA LA MAMA for postpartum mothers.
- Identified the Karatu Health Center's urgent need for an ultrasound machine, as they serve over 150 birthing women monthly but lacked proper technology for complications.
 - Raised \$17,000 to purchase an ultrasound machine for Karatu HC, facilitating training for Dr. Simpa
- Ensured equipment purchases were accompanied by proper staff training and technology suitability for clinic environments.
- In 2024, made significant progress with Karatu Lutheran Hospital by acquiring:
 - 3 medical oxygen concentrators
 - 3 oxygen splinters for neonates
 - 2 overhead heat lamps
 - 4 fetal dopplers.



"Every month, we see women and families whose lives are forever changed by the kind of care they receive—or don't. The difference between joy and tragedy often comes down to the presence of skilled and compassionate care during childbirth. This isn't just about numbers; it's about real lives, hopes, and the future of our communities."

*Dr Heriel, Director of Karatu District Hospital,
Tanzania:*

WOTW FOUNDATION & TANZANIA

Improve Birth Outcomes

Expand Neonatal Care

With approximately 4 of each 100 babies born dying, infant mortality rates in TZ leave tremendous room for improvement

Evidence Based Care

The model of care is outdated and no longer evidence based.

Education

Fund supplemental training and education for hospital staff at the Karatu District Hospital.

Equipment

Purchase the needed equipment to better support distressed infants or high risk births.

Trainings

WotW Foundation can bring in guest teachers to lead workshops on things like infant resuscitation or should distocya.

Education

Fund hospital staff seeking to further their education by providing schlarships.



WOTW FOUNDATION & ECUADOR

Globalization threatens to erase the invaluable perinatal traditions of Ecuador, diminishing the role of traditional midwives who are custodians of ancestral knowledge and holistic care. This loss risks not just cultural heritage but the very fabric of maternal health, underscoring the urgent need for culturally competent care. Our response is focused and determined:

Why Traditional Midwives? They're not just caregivers; they're a bridge between past and present, offering care that respects cultural beliefs and meets community-specific needs. Supporting them means preserving a lineage of wisdom that is disappearing in the face of modernization.

Preservating Traditional Birth Practices

Increase access to care

Fund Traditional Midwifery School

Partnering with Martha and Luzmila Antonigo to build a traditional midwifery school in Cotacachi, Ecuador.

The school needs \$60,000 per year for operations.

Building a "Women's Empowerment House"

Partnering with Martha and Luzmila Antonigo want to build a traditional birth house in thier community to offer women more access to safe care.

The project is an estimate \$120,000.



"In our hands, we hold centuries of ancestral birth knowledge, understanding the depth of care that intertwines with the spirit of nature and humanity. The pedagogy and hierarchy of education must evolve—where medical doctors and traditional midwives learn from one another, recognizing the value each brings to maternal health. Wombs of the World has seen the significance of our teachings, aiding in the preservation and dissemination of our seeds of knowledge. It's a partnership where wisdom flows both ways, ensuring mothers everywhere receive the most compassionate, holistic care. This mutual exchange enriches us all, reminding us that every birth is a legacy of shared knowledge and respect."

Martha Arotigo, Traditional Midwife and total powerhouse in Cotacachi, Ecuador



JOIN OUR GLOBAL NETWORK: UNITING FOR MATERNAL HEALTH

Joining the Wombs of the World Foundation's Global Network means becoming part of a collaborative force dedicated to making significant strides in maternal health worldwide.

Understanding Our Budget: A Commitment to Impact and Efficiency

Our budget is strategically allocated to ensure that every contribution directly supports our mission:

- **70% to Core Programs:** Focused on community-led initiatives, scholarships, and educational resources, with:
 - 70% to community initiatives,
 - 15% to scholarships,
 - 15% to educational development.
- **15% to Operations and 15% to Overhead and Legal:** Essential for our foundation's effectiveness and compliance.



This network is not just about financial contributions; it's a commitment to shared goals and collective action.

Join us, and let's make history, one birth at a time.

Transforming Maternal Health: Your Role in Our Mission

Why Join

- **Global Recognition:** Your support will be acknowledged across our communications, highlighting your crucial role in this global effort.
 - **Tap into our 58K engaged followers** on instagram.
 - Be featured in our newsletter going out to **1500 subscribed** readers.
- **Direct Impact:** Gain insights into the tangible outcomes of your support through impact reports and stories from the communities we serve.
- **Networking and Collaboration:** Connect with like-minded organizations, share resources, and explore potential collaborations that leverage collective strengths for greater impact.
- **Learning and Engagement:** Access exclusive learning opportunities and engage with experts and leaders in maternal health through webinars and events.



Tiered Sponsorship Opportunities:

01. Birthworker Empowerment Sponsor (\$1,500 – \$9,999)

- **Impact:** Funds scholarships and essential supplies for birthworkers, amplifying their ability to provide compassionate care globally.
- **Sponsor Benefits:**
 - Recognition on our website and a thank you post on our social media platforms, leveraging our extensive reach to over 58.6k followers.
 - Your logo featured in our monthly newsletter to supporters.



02. Innovation Leader (\$10,000 – \$24,999)

- **Impact:** Enables the development and dissemination of innovative educational materials and resources, advancing global maternal health knowledge and practices. Contributions at this level may also **include in-kind donations** of medical equipment or educational technology.
- **Sponsor Benefits:**
 - All benefits of the Birthworker Empowerment Sponsor.
 - Two targeted social media promotional posts.
 - Opportunity to sponsor a specific educational project, named in your honor or your organization's name.

03. Legacy Creator (\$25,000 and above)

- **Impact:** Provides transformative support for large-scale projects such as building a maternal healthcare facility, launching a comprehensive community health initiative, or funding a significant cultural preservation project.
- **Sponsor Benefits:**
 - All benefits of the Innovation Leader.
 - Featured article in our newsletter and on our website, detailing the story and impact of your sponsorship.
 - Opportunities for a co-hosted webinar or live session discussing maternal health topics relevant to your interests



Material Support for Maternal Health

In-Kind Donation Opportunities:

In addition to financial contributions, we welcome in-kind donations that support our core objectives. These donations can range from vital medical equipment to basic needs that support maternal and infant health. Examples include:

- **Medical Equipment:** Such as portable ultrasound machines, neonatal CPAP machines, dopplers, neonatal incubators, and examination lamps. These high-impact items significantly enhance the care capacity of healthcare facilities we partner with.
- **Perinatal Supplies:** Including period underwear, breast pumps, haakaas (silicone breast milk pumps), vitamins, baby clothes, and prenatal supplements. These supplies ensure mothers and infants have the essentials for a healthy start.

Your in-kind contributions not only support community initiatives directly but also allow us to allocate financial resources to other critical areas of need.

Together, we can nurture a future where every birth is supported, safe, and celebrated.



How to Donate **YOUR SUPPORT MAKES A DIFFERENCE**

Direct Donation made via Paypal to
wombsfoundation@gmail.com

or make a check out to
Wombs of the World Foundation

and mail it to
Wombs of the World Foundation
15077 E. Wagontrail Dr
Aurora, CO 80015

If you would like further information
regarding how to make this tax
deductible, please email
wombsfoundation@gmail.com



**CONTINUE
LEARNING MORE**

SCHEDULE A CALL

wombsfoundation@gmail.com
wombsoftheworldfoundation.co
m
@wombsoftheworld